

MEGA POWER FLOOR GRINDER



Global Business
SOLUTION

Before use, the user must be trained in handling the machine and the hazardous dust.

- 1) Position the grinder in the working area.
- 2) Check the dust cover tightened.
- 3) Check the electric specification – 220V single phase, 50Hz.
- 4) Do not use it on wet floor.
- 5) Always wear personal safety equipment such as sturdy non-slip boots, ear protection, dust mask and approval eye protection.
- 6) The machine should not be used in areas where potential for fire or explosions exist.
- 7) Make sure the cord is not pinched in doors, fences or the like.

NOTICE :

- * Please pay attention to the safety instructions.
- * Please read this instruction manual carefully before using Grinder GBS-24



MPG-24(E) Specification

Overall Size	55 x 135 x 110 cm
Grinding Width	550 mm (22 inch)
Weight	106 kg
Power	2.6kw / 3HP
Voltage	220V/50Hz single phase 3HP
Performance	Max 200m ² /HR

⑫ Clamp for handle adjustment

⑬ Knob for level adjustment

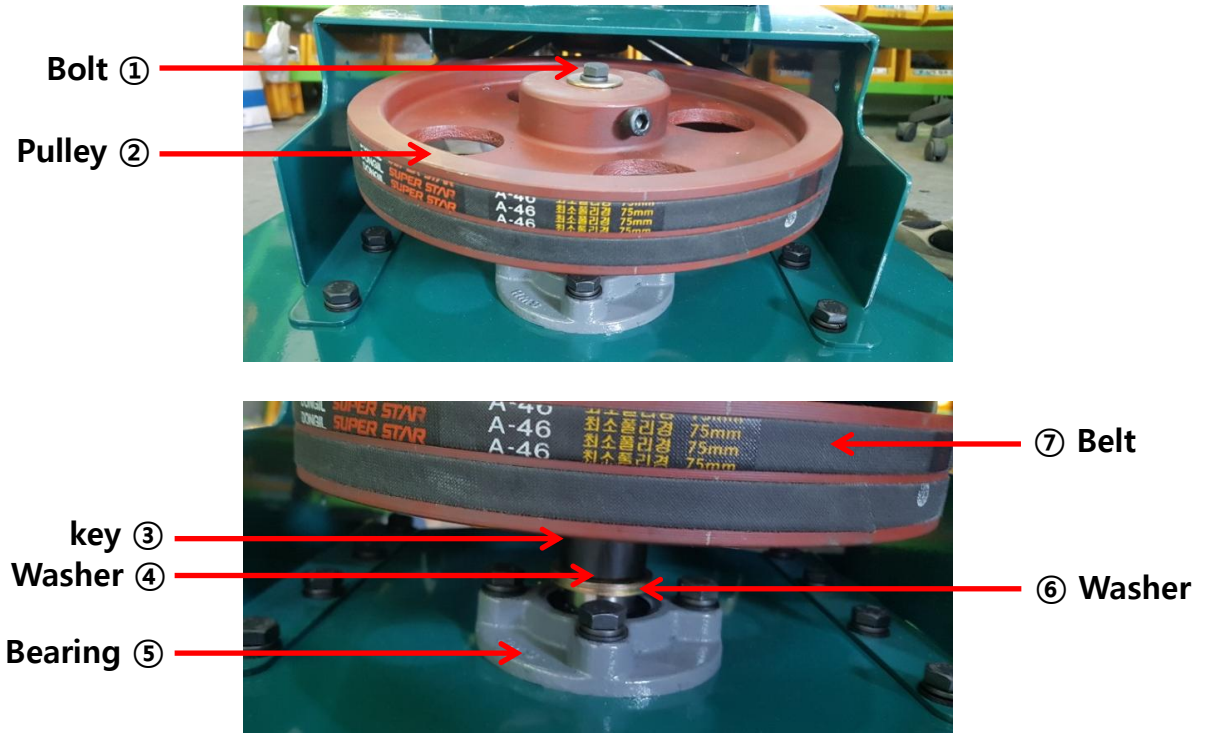


⑭ Wheel shaft

⑮ Wheel

The inner structure of the main belt cover.

** Open only when replacing the belt.



NO.	Part #	Part Name	Specification
1	GBS-24(E)-A01	Bolt	8mm x 20mm
2	GBS-24(E)-A02	Pulley	10 inch
3	GBS-24(E)-A03	Key	6mm x 6mm x 35mm
4	GBS-24(E)-A04	Shaft	20 ∅
5	GBS-24(E)-A05	Washer	
6	GBS-24(E)-A06	Bearing	FC-205, UC-205
7	GBS-24(E)-A07	Belt	A-46



Clamp for handle adjustment

Up and down the handle for user's Convenience.



Knob for level adjustment

Turn Right: Inside down, Outside up

Turn Left: Inside up, Outside down

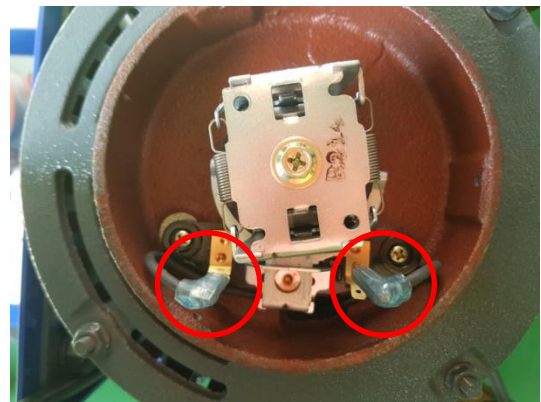
Motor Point Part



Motor Point



1. Loosen the three bolts on the top (side) of the motor



2. Disconnect the wire connected to the motor pointer



3. Loosen the two bolts on the motor pointer.



4. Disconnect the Motor point and replace it.

Mounting of Grinding Disks

- Take the following safety measures when mounting grinding disks.
- Remove any weight.
- Disconnect the power supply and the power cable.
- The machine up, and remove the old grinding disks using the special tool. The tools can be also be bolted to the machine if required.
- Caution : The disks may be hot after operating the machine.

- See pictures as following.
- The direction of disc rotation counterclockwise. Therefore, bolting direction to fasten the disc to center shaft should be clock wise.

Mounting of Grinding Disks

Diamond cup Wheel

1



2



3



4



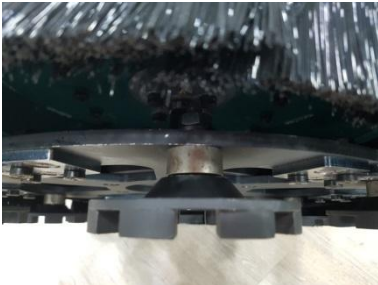
5



6



7



8



**** Check cup wheels
(moving, not fixed)**

OPERATION

The following section describes how to operate and use the grinding machine. The section does not deal with the technical aspects of grinding such as choice of grinding tool etc.

NOTE :

Only personnel with the requisite training may operate the machine.

It is assumed that the relevant personnel have read the safety regulations.

And that the machine is positioned on the surface intended for grinding, that the surface is not inclined and that the grinding disks are mounted.

▣ TIP : Right position to start.



** If you start on concrete surface may be damaged for the motor due to the load.

MEASURES PERIOD TO START :

1. Inspect the floor carefully and remove any protruding items such as reinforcement bars and bolts, as well as any loose material that could get caught in the machine.
2. Set the handle bar in the desired working position.
3. Fit the appropriate tools to the machine.
4. Mount and check the splashguard.
5. Connect the voltage to the terminal on the side of the frequency converter.
6. If the floor is dry ground, a dust extractor should be connected and started before starting the machine.

START OF MACHINE :

1. Push the on button.

MAINTENANCE

Always clean the machine after use. Do not use a pressure washer as this can force water into various components causing damage. We recommend the regular inspected once three month and change if worn.